

# Panorama II

SEAFRONT HOMES

...because you can't carry your house everywhere...



...we created a new one just for you !

## WHO WE ARE

### INTERLAND CONSULTING S.A.

Interland Consulting S.A. started specializing in property development focusing in the international market since 1990. We were the first company to officially enter this market on the island of Crete. Our company is located in the beautiful historic town of Rethymno and our development locations are very carefully selected to be near traditional villages with necessary amenities, seafront and/or with spectacular sea views. All built with LIFESTYLE in mind...



Our team of architects are renowned in Greece and always ensure that our developments offer a wide choice of home types for every client and budget.

Most importantly our homes are built for all year round living with really superior standards of construction/technical standards.

Our team will ensure that you are our number one priority from the first point of contact till after we have delivered your home. Our service goes beyond excellence, it is personalised and all dealings transparent.

## THE LOCATION

The seafront project lies on the western side of the tranquil unspoilt fishing village, Panormo, which is a typical example of a Greek village. With its whitewashed buildings gleaming in the midday sun, a mini-maze of back streets sloping gently down to the small harbour and the pretty beach. It lies only 58 km west of Heraklion town/airport and 55 minutes from the Golf course. The beautiful town of Rethymno with its magnificent old Venetian town, harbour and new marina is only 22 km away.



## THE PROJECT

Following the successful completion of Panorama Seafront Homes I, coupled with the increased demand for luxury, investment, holiday and retirement properties by the sea, we are pleased to announce the launch of phase II.

**Panorama Seafront Homes - Phase II** is a new, luxury freehold housing community built to international standards marked by high quality construction and a unique sea facing location.

All homes enjoy excellent views over the subtropical communal pool area with cascading waterfalls, tropical gardens and/or the sea. Tucked away lies a secluded nearby pebble beach.

**Panorama Seafront Homes - Phase II** presents a sound investment opportunity to interested parties, as all homes are designed according to the Greek Tourism Board (EOT) specifications for rental purpose. An investment by owning a home here comes with significant potential for immediate capital appreciation and returns.



## THE HOUSES and APARTMENTS

The development comprises of one, two and three bedroom homes that vary in size and design to cater for permanent as well as holiday living.

They all have spacious verandas and balconies with magnificent sea and pool views. For aesthetic variety, the units are not identical. Specifications will include fixtures & fittings, fully fitted kitchens and bathrooms, under floor heating, double glazing, traditional wooden pergolas with bamboo cover, satellite TV point, a wireless internet access point, etc.

Our in-house property management company will insure the best possible after sales service.



## THE VILLAGE of PANORMO

Panormo has not been affected by the onslaught of mass tourism. The warm and friendly inhabitants, less than 500, still work in the fields on the small fertile plains, or else are shepherds and fishermen.

The traditional village square, with taverns and Kafenea and the old picturesque houses are being renovated and restored with great elegance. For shopping the village has mini markets, a bakery, butchery, gift shops, post office, car hire etc.

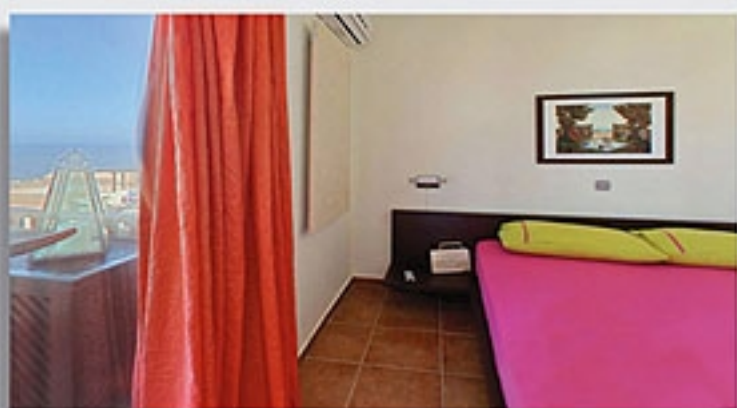
In and around Panormo you'll find small beaches of smooth sun-warmed pebbles, sandy coves, some with water sports facilities, fishing, diving etc.

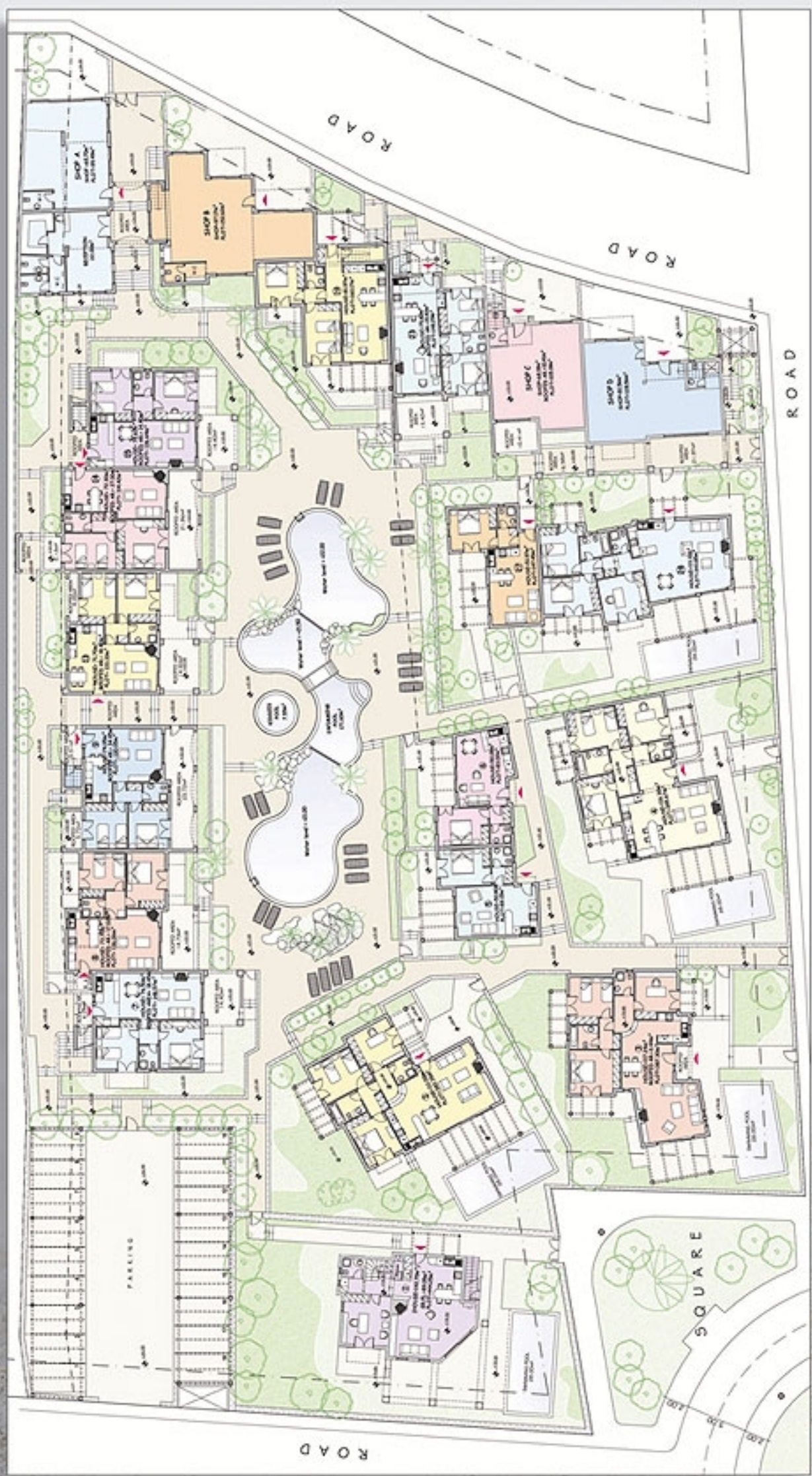
There are buses, which go regularly to Rethymno (15 min) or to Heraklion and Chania making Panormo an ideal base to explore many parts of Crete.



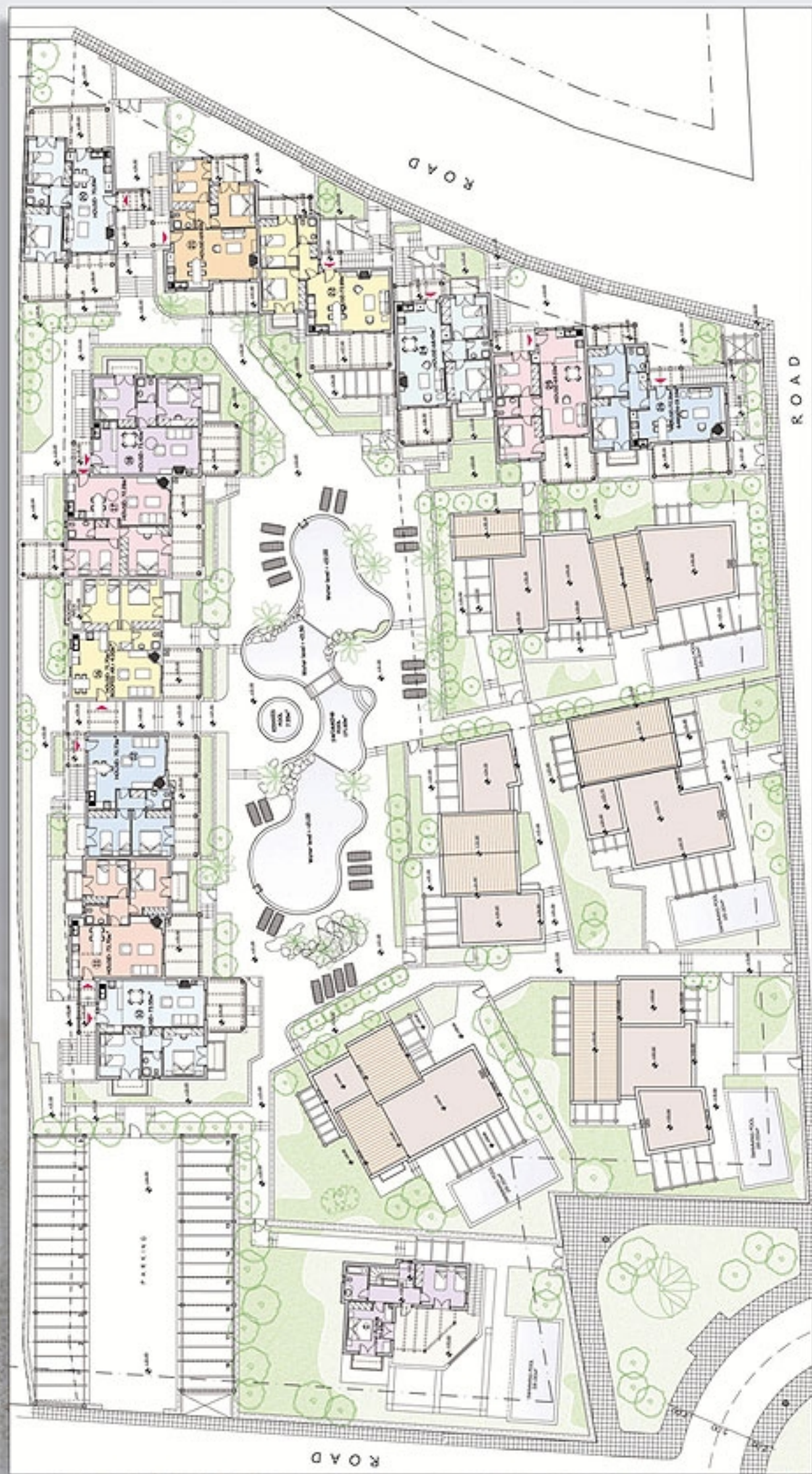


Have a closer look at Panorama Seafront Homes I  
and get a taste of what your home could look like !

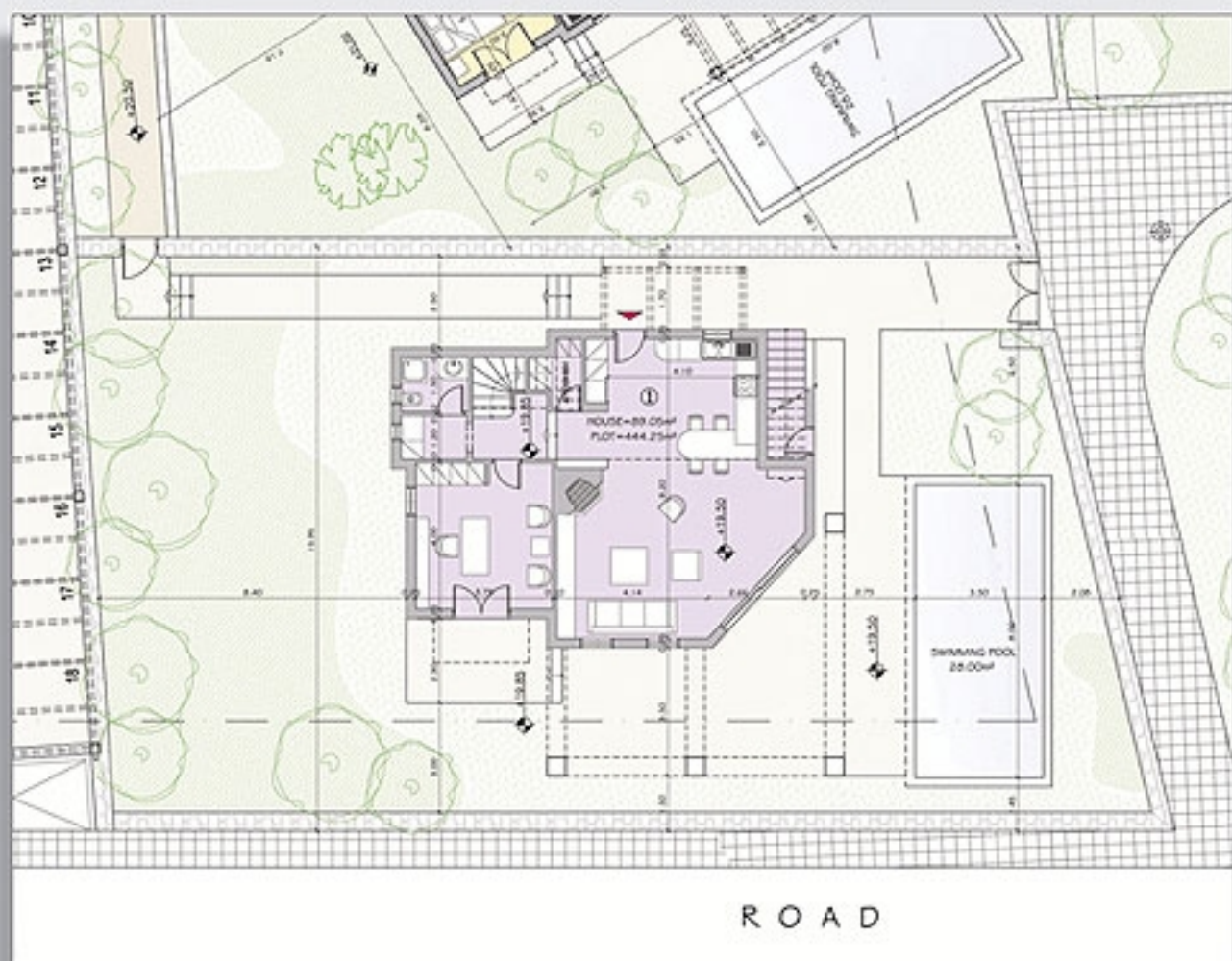




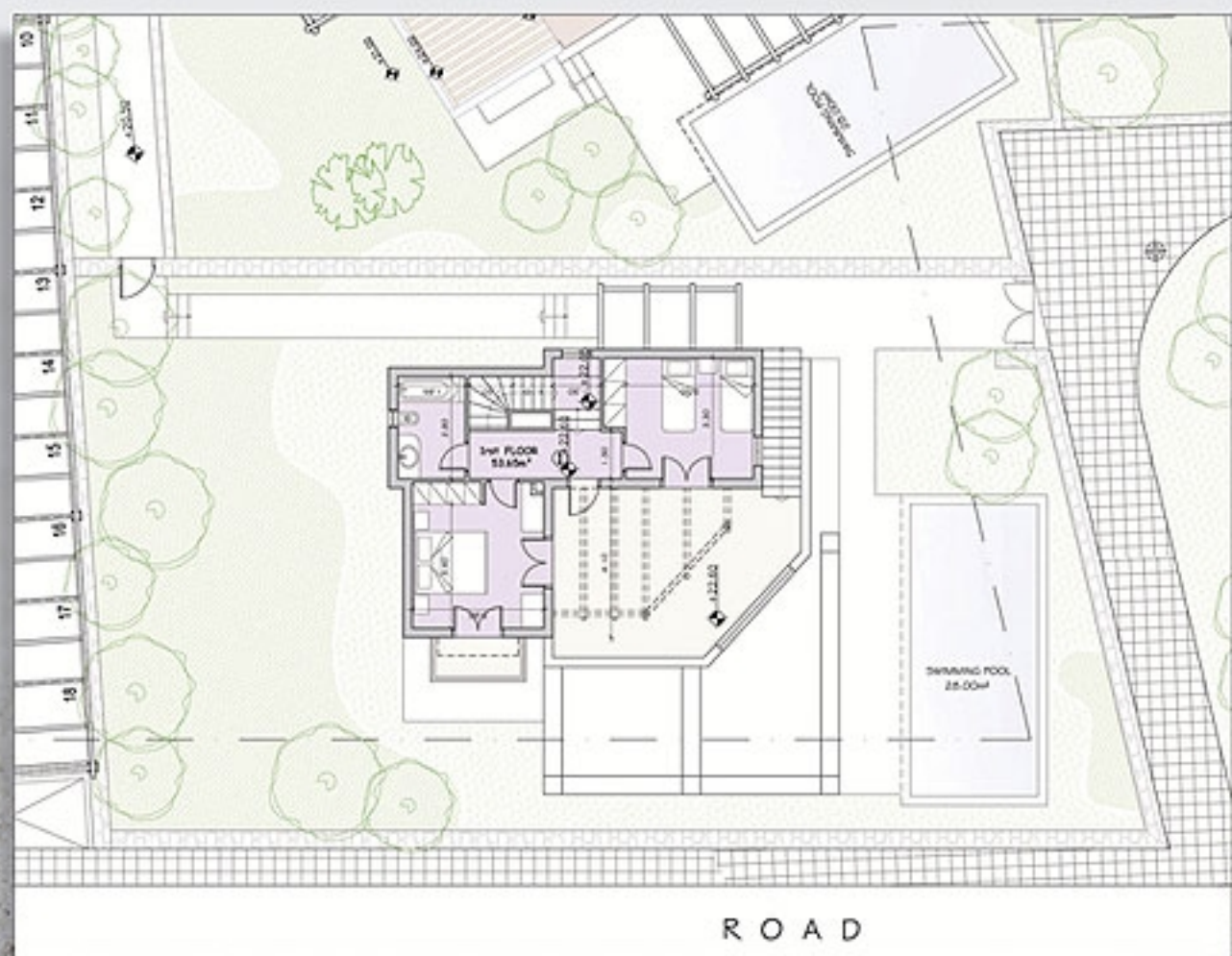
GROUND FLOOR PLANS



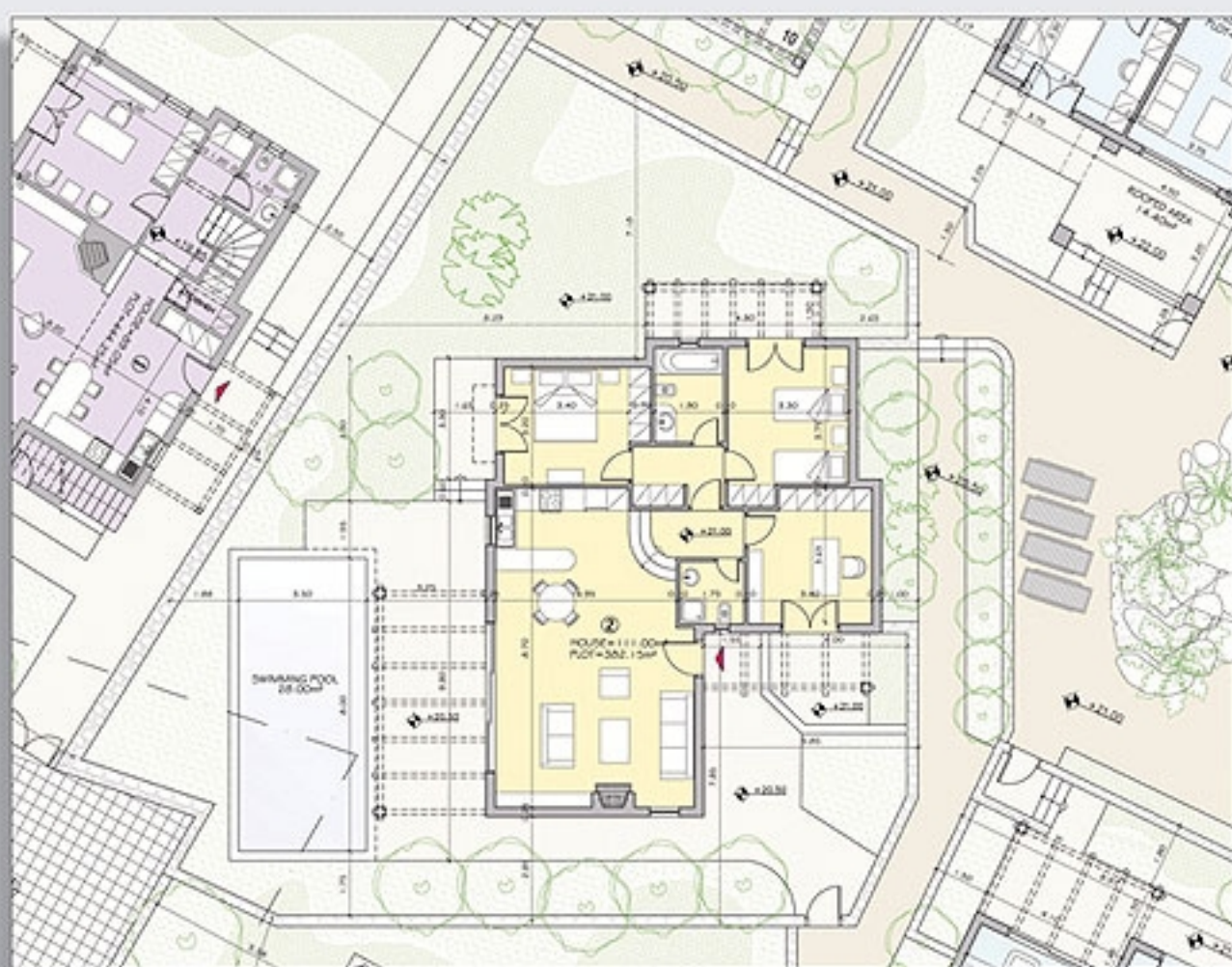
FIRST FLOOR PLANS



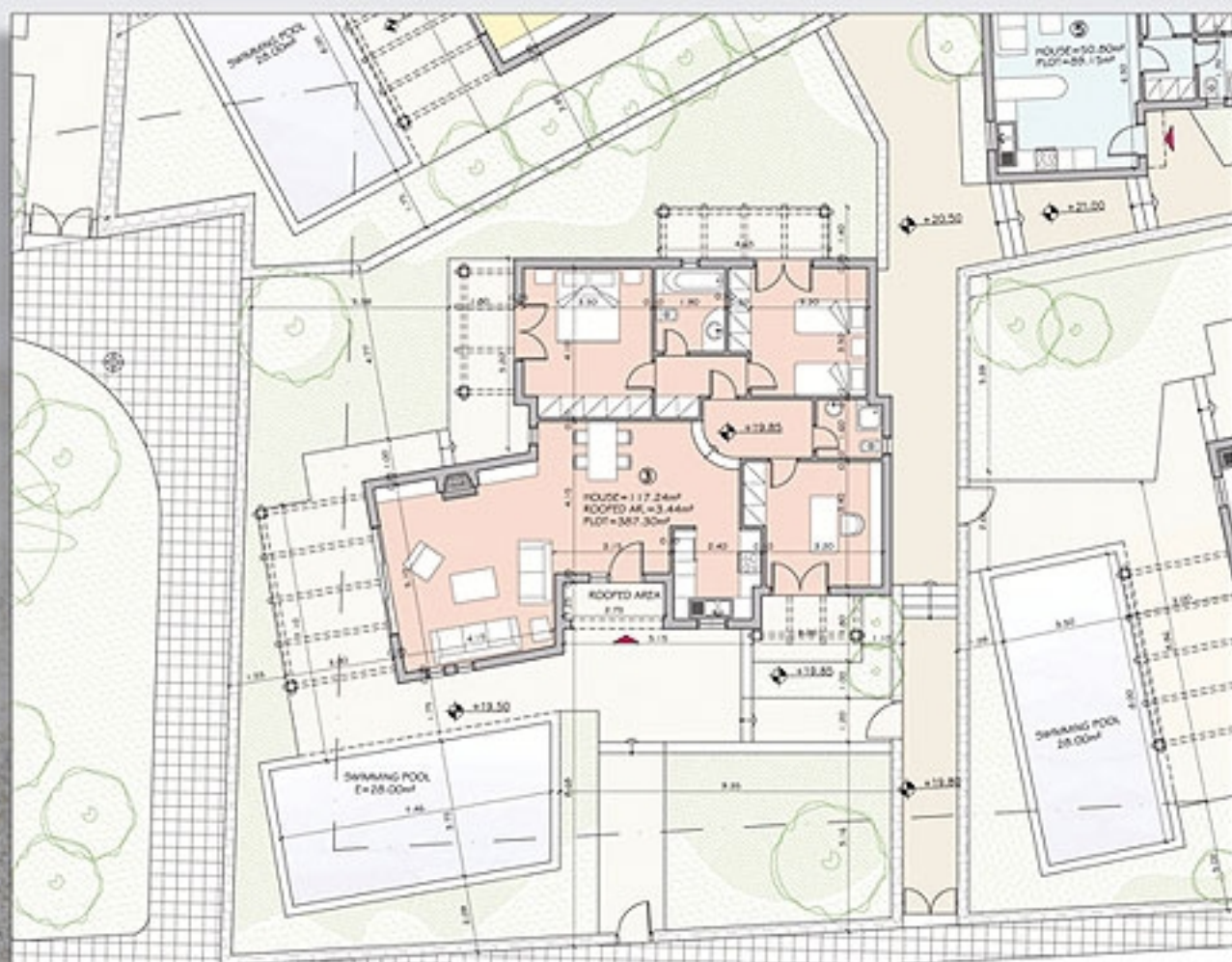
GROUND FLOOR PLANS - HOUSE 1



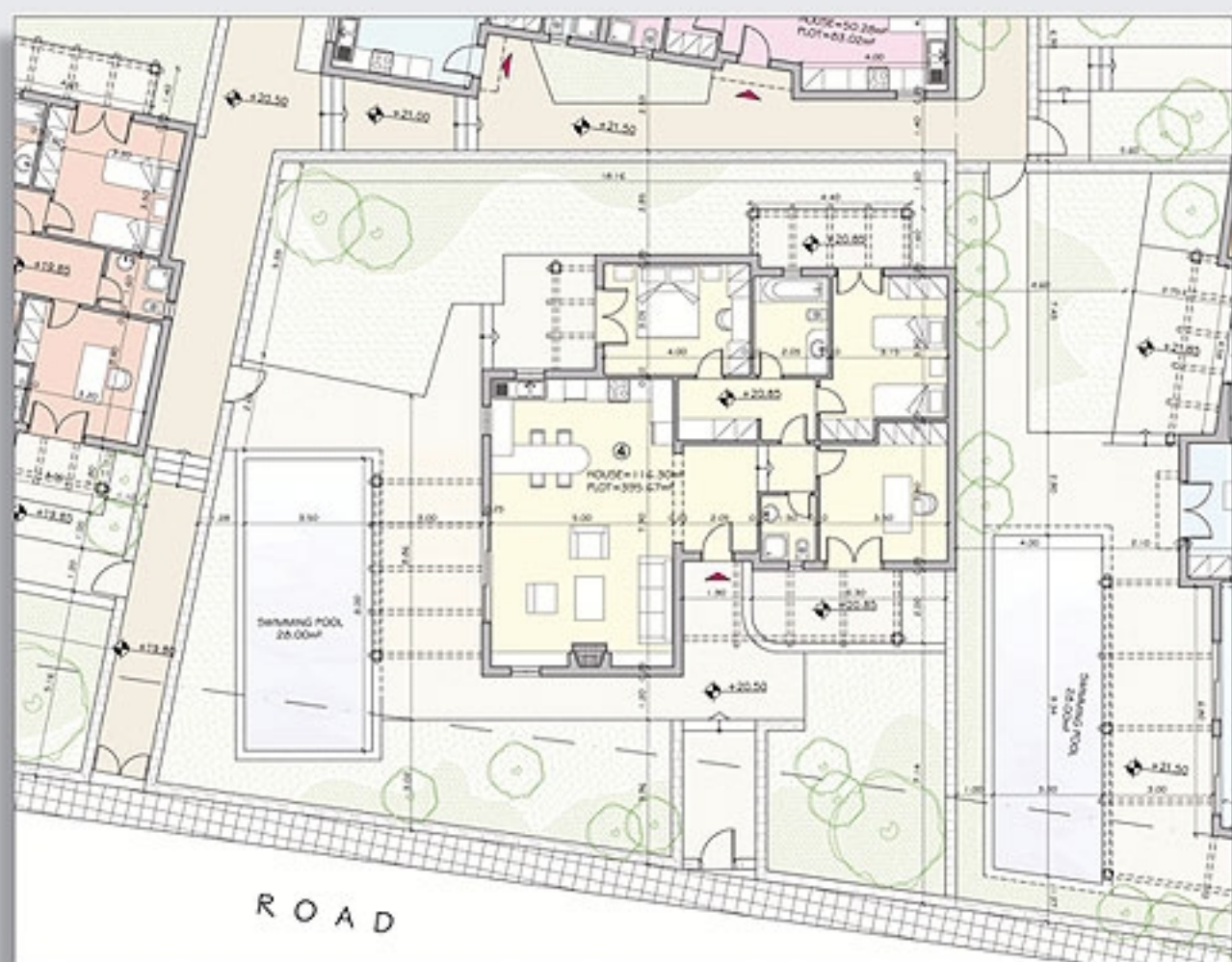
FIRST FLOOR PLANS - HOUSE 1



GROUND FLOOR PLANS - HOUSE 2.



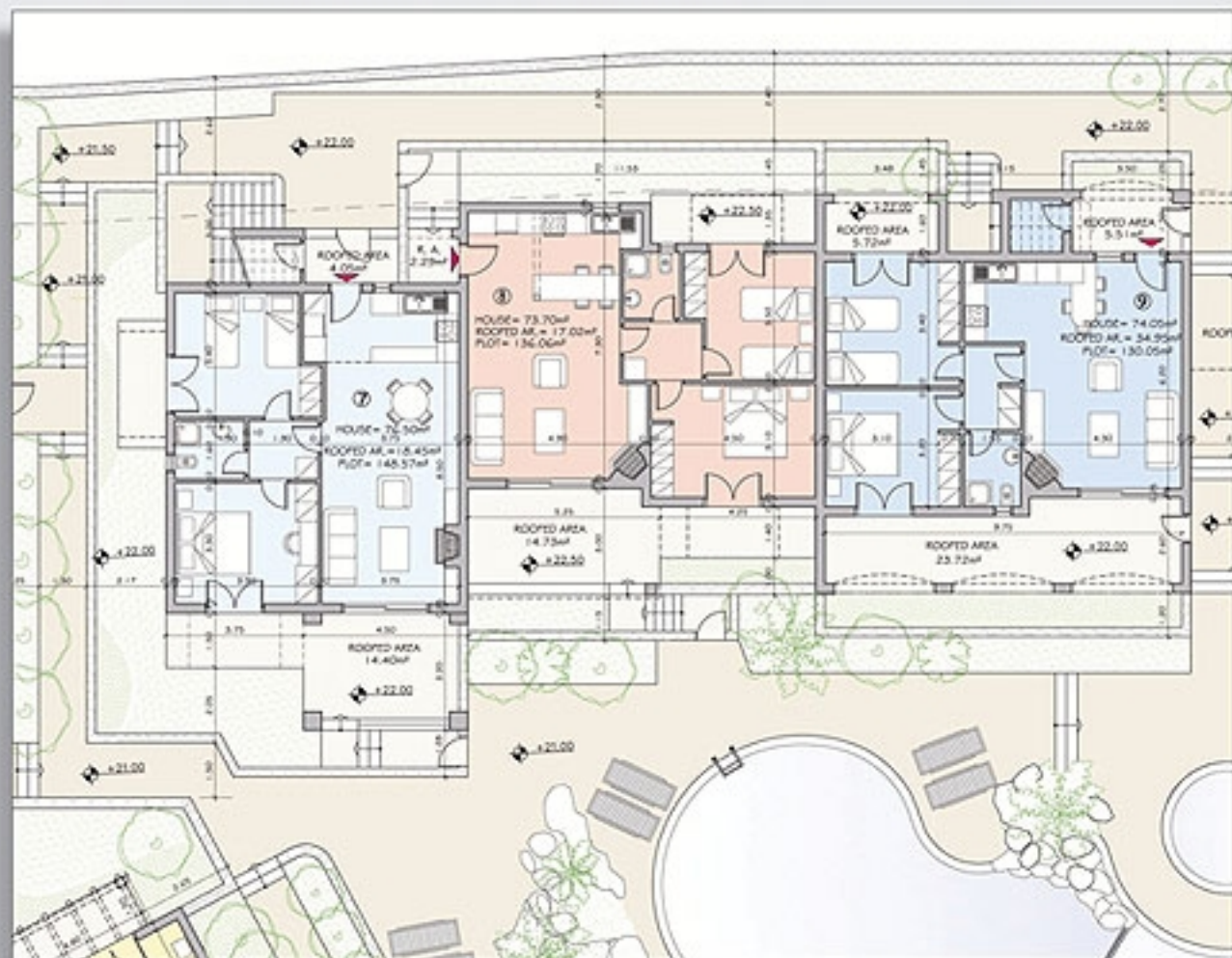
GROUND FLOOR PLANS - HOUSE 3



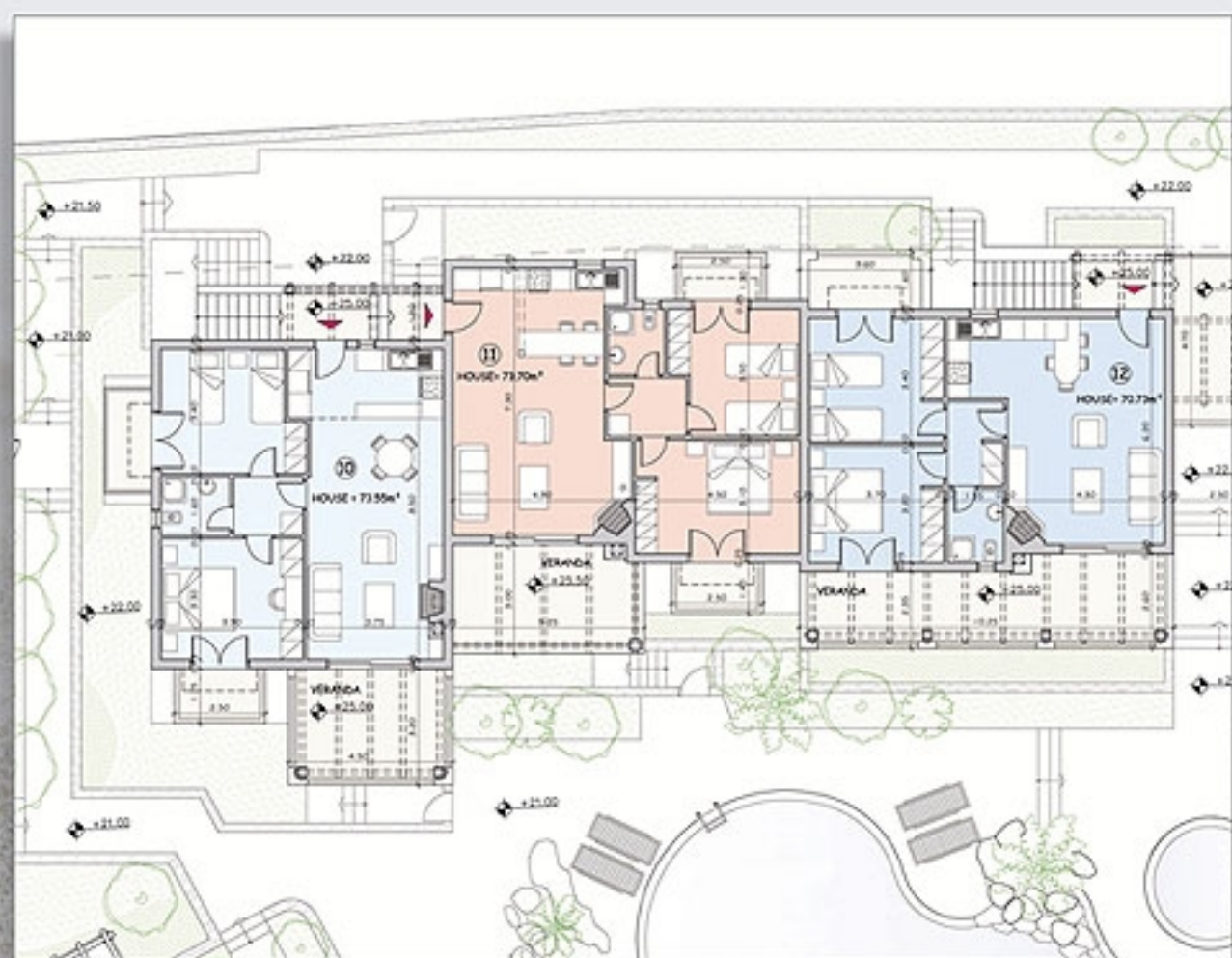
GROUND FLOOR PLANS - HOUSE 4



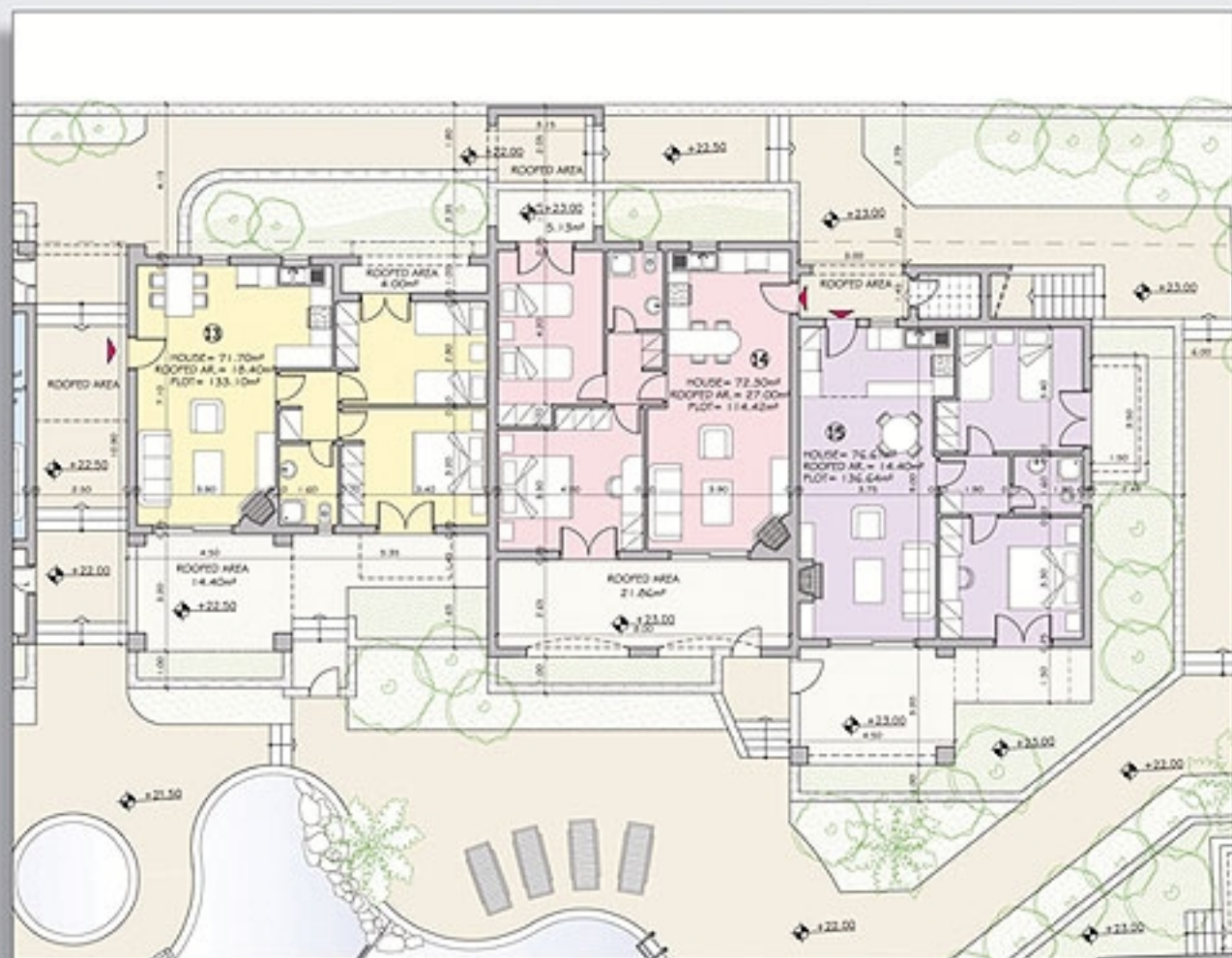
GROUND FLOOR PLANS - HOUSES 5 - 6



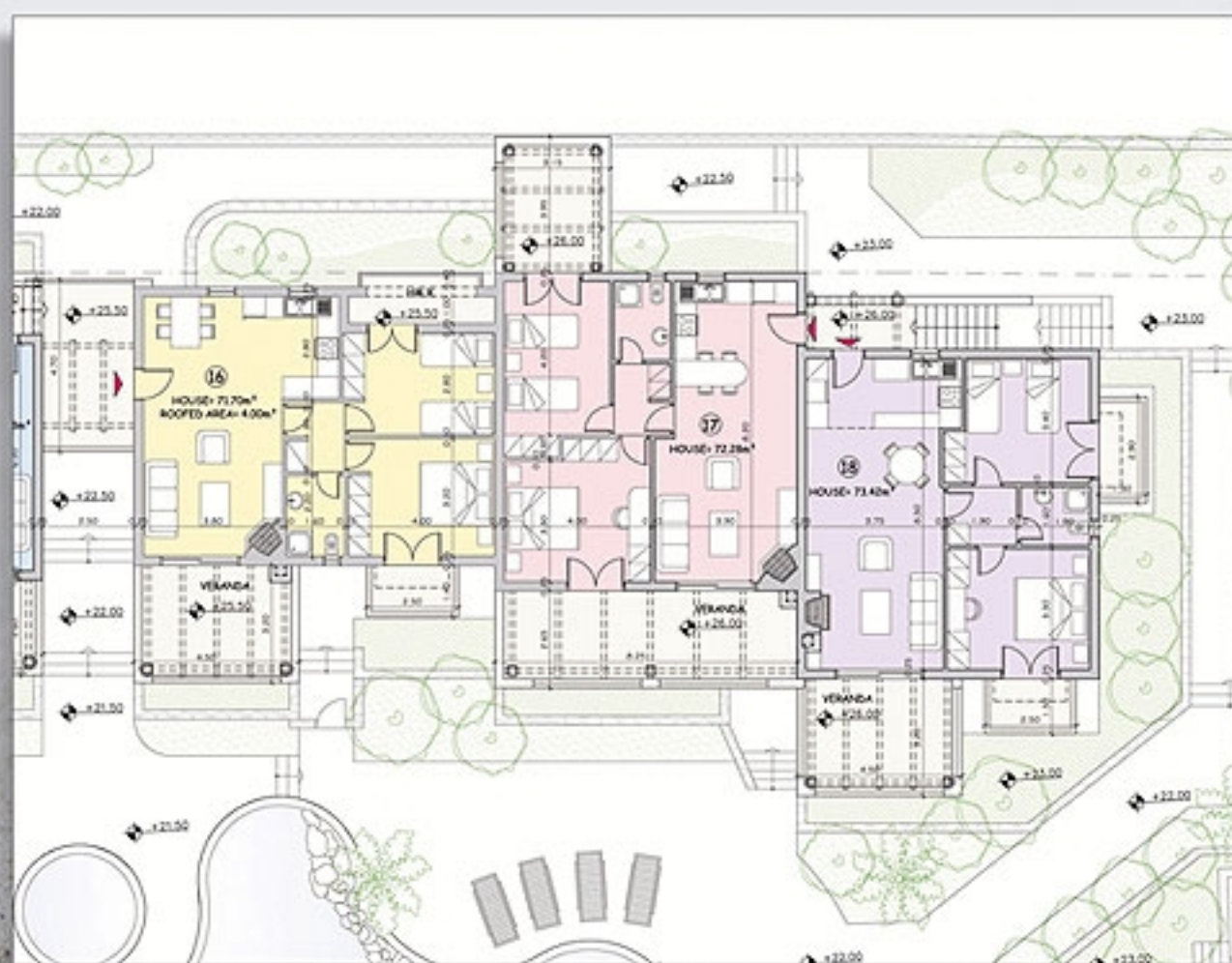
GROUND FLOOR PLANS - HOUSES 7 - 8 - 9



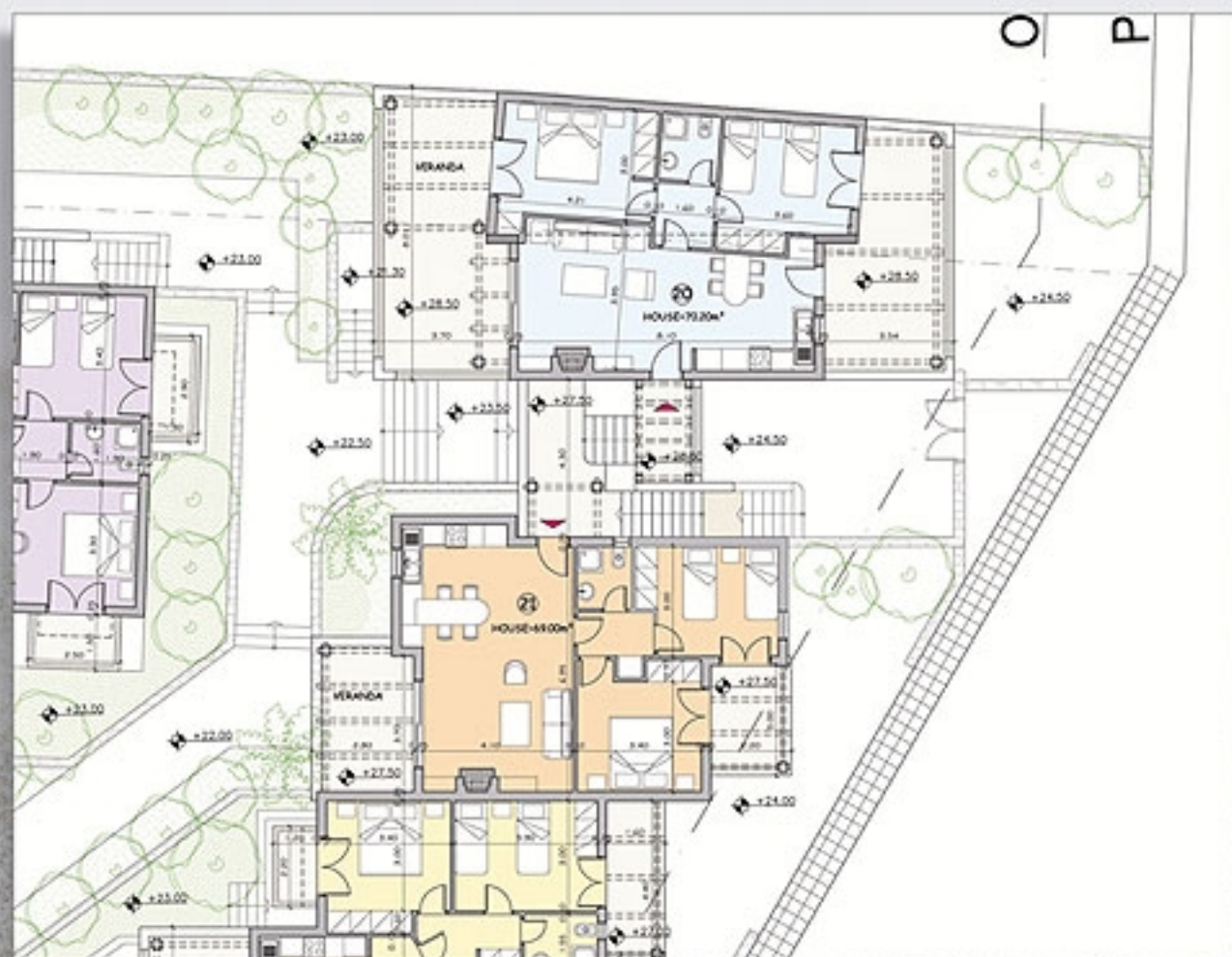
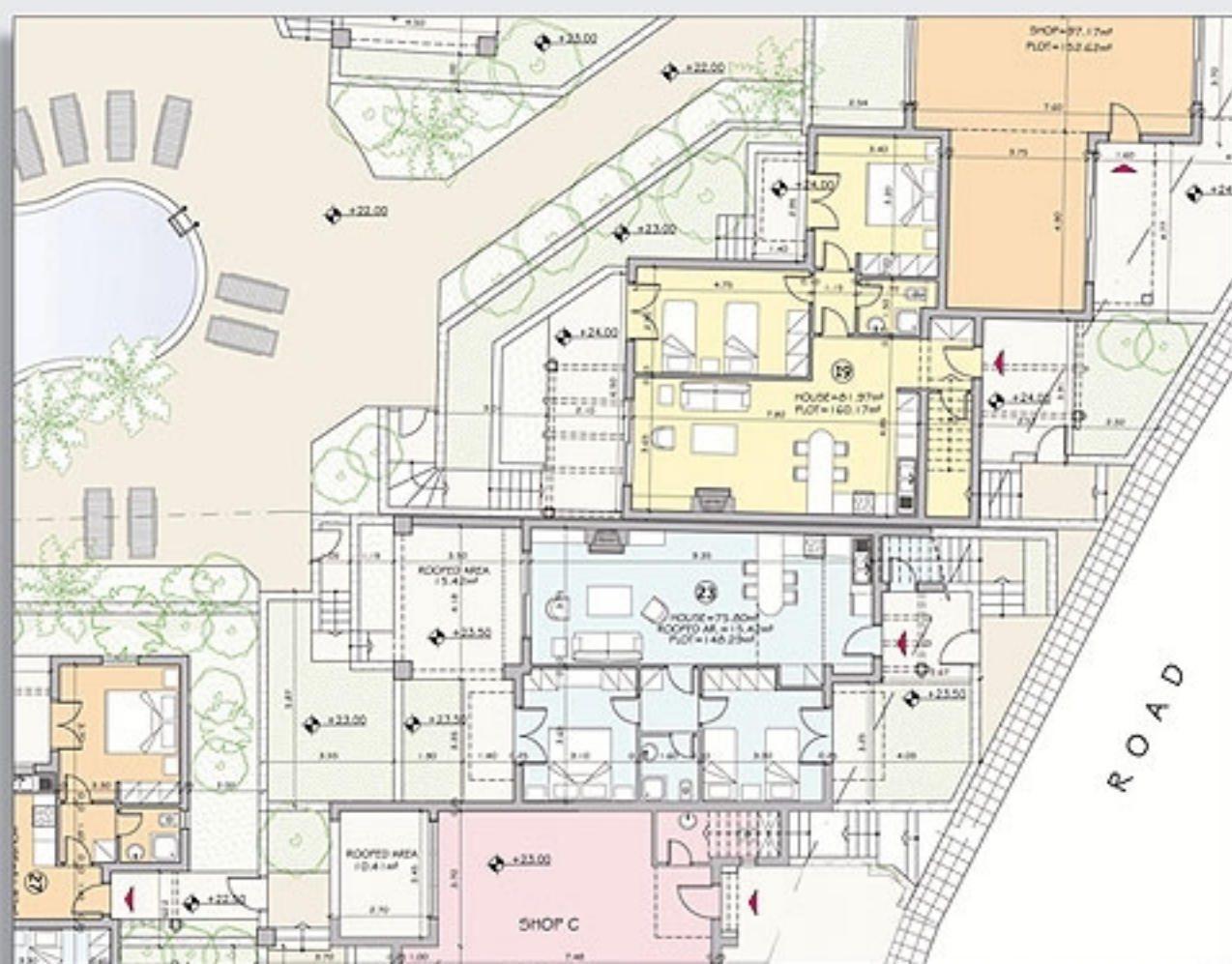
FIRST FLOOR PLANS - HOUSES 10 - 11 - 12

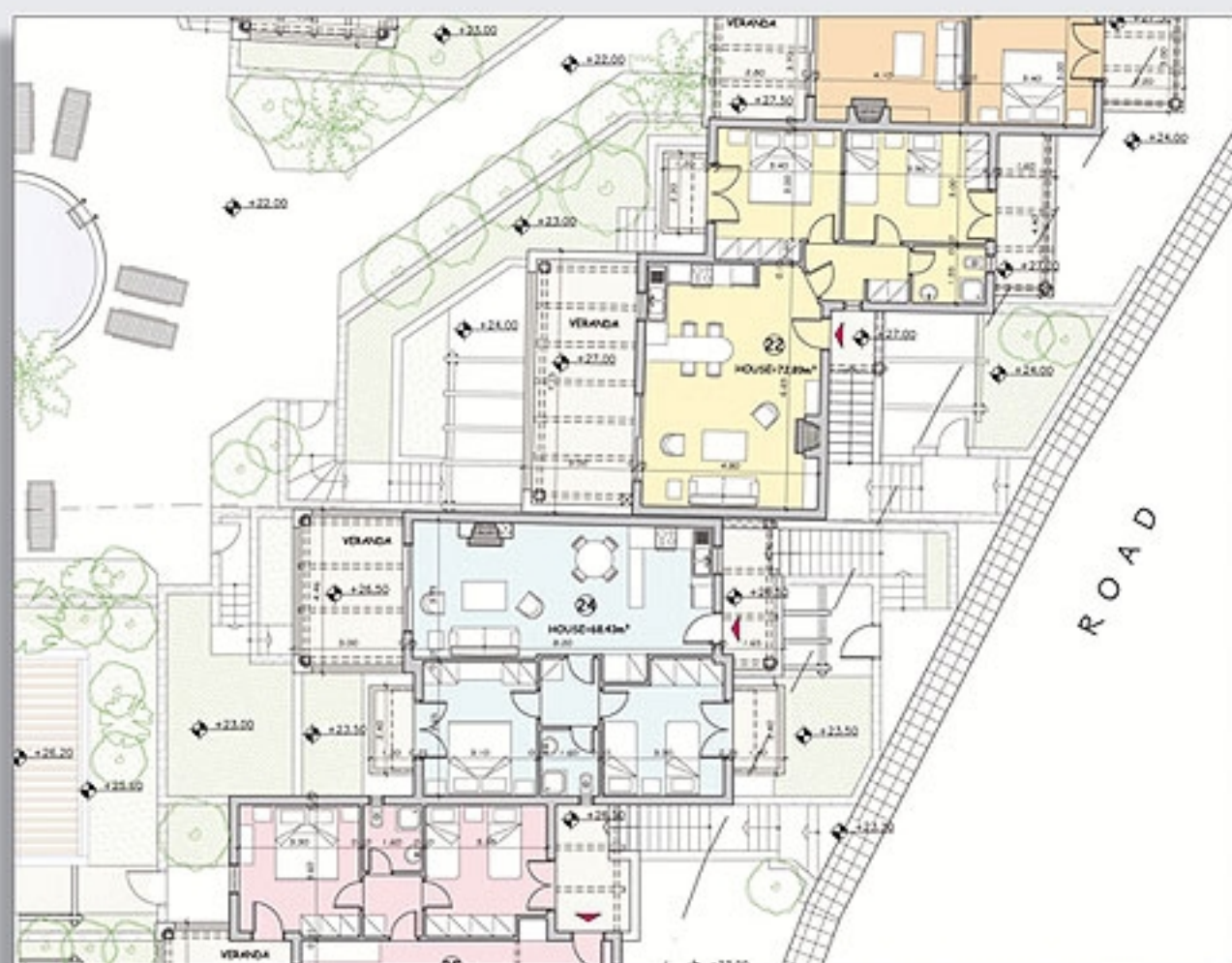


GROUND FLOOR PLANS - HOUSES 13 - 14 - 15

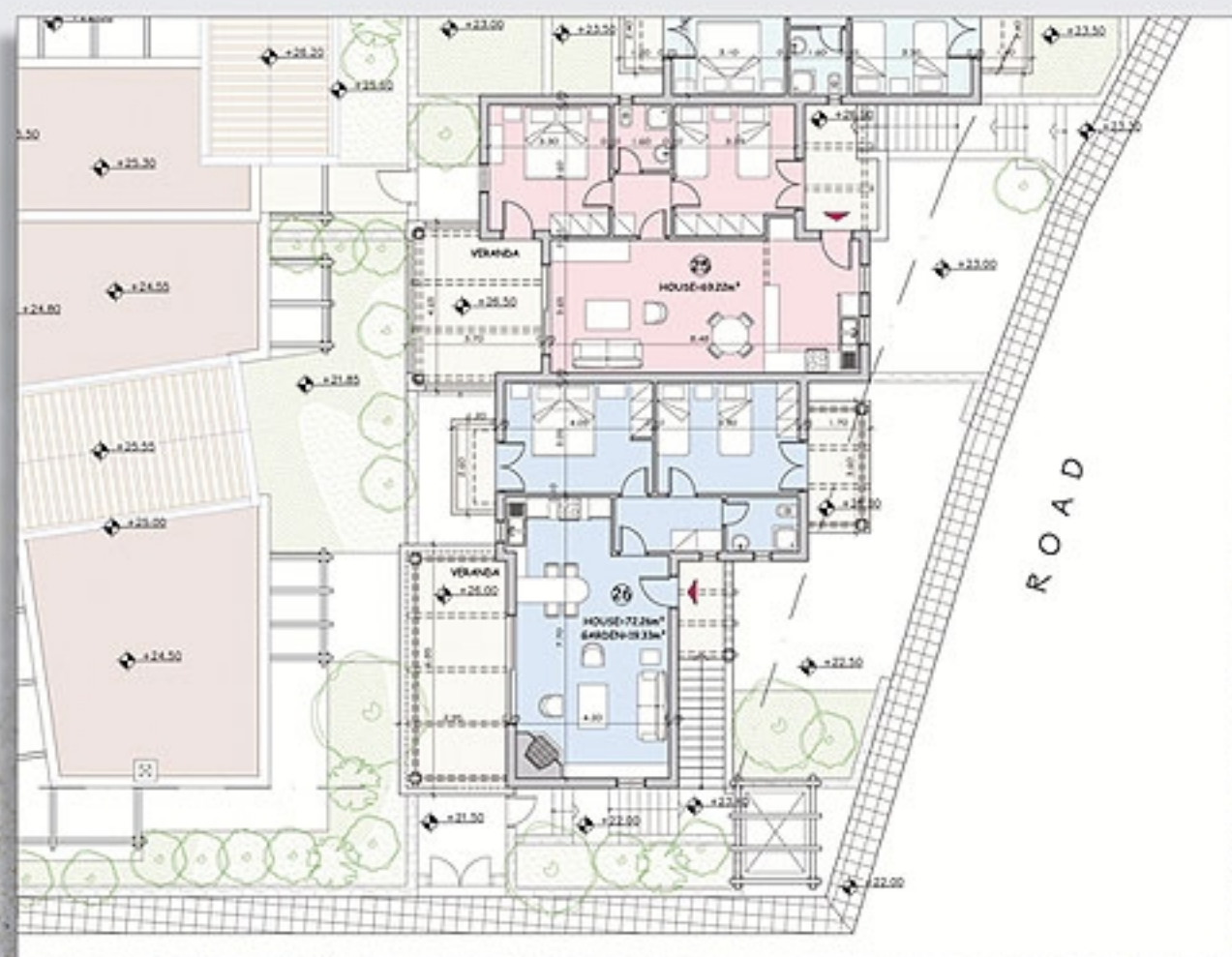


FIRST FLOOR PLANS - HOUSES 16 - 17 - 18

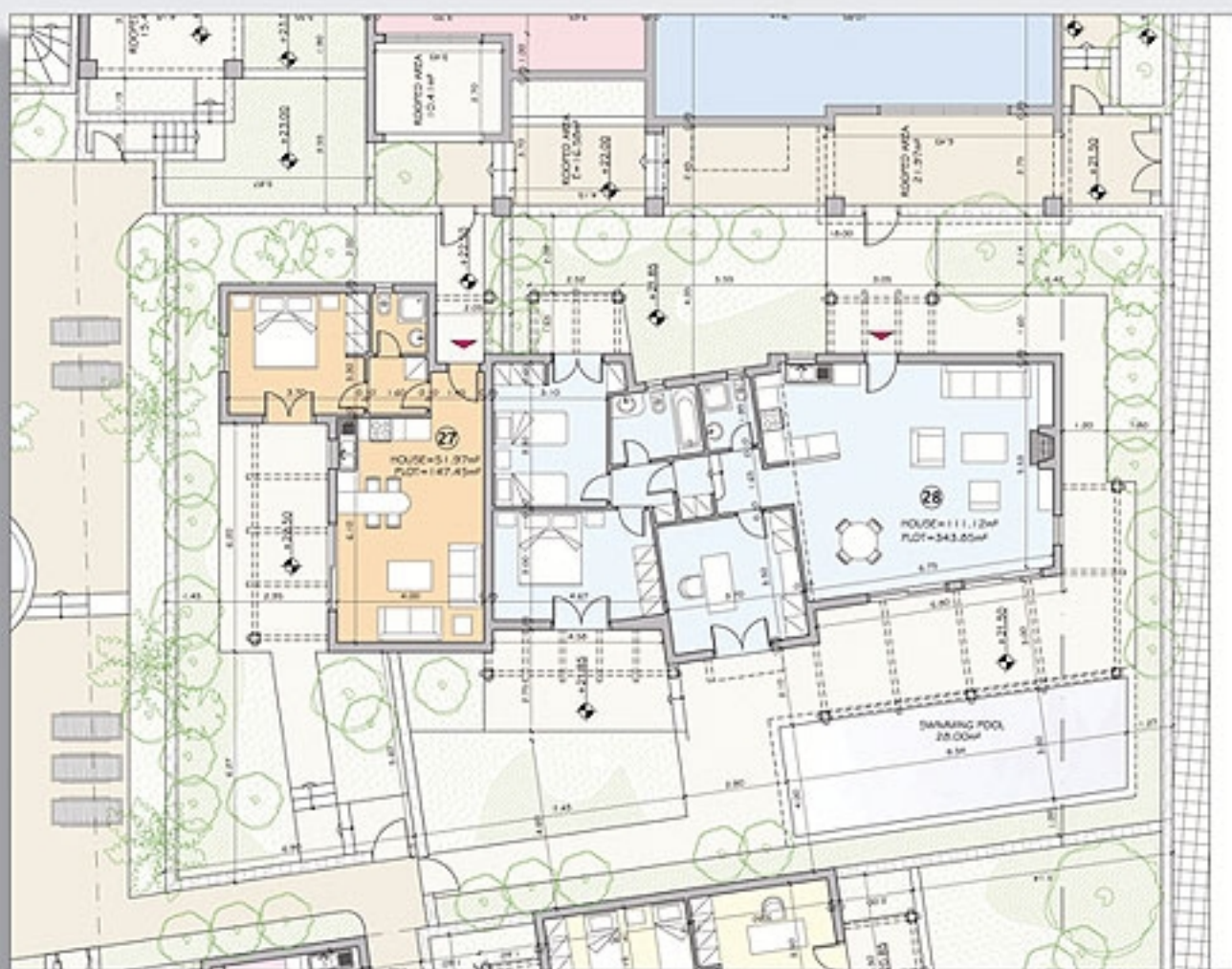




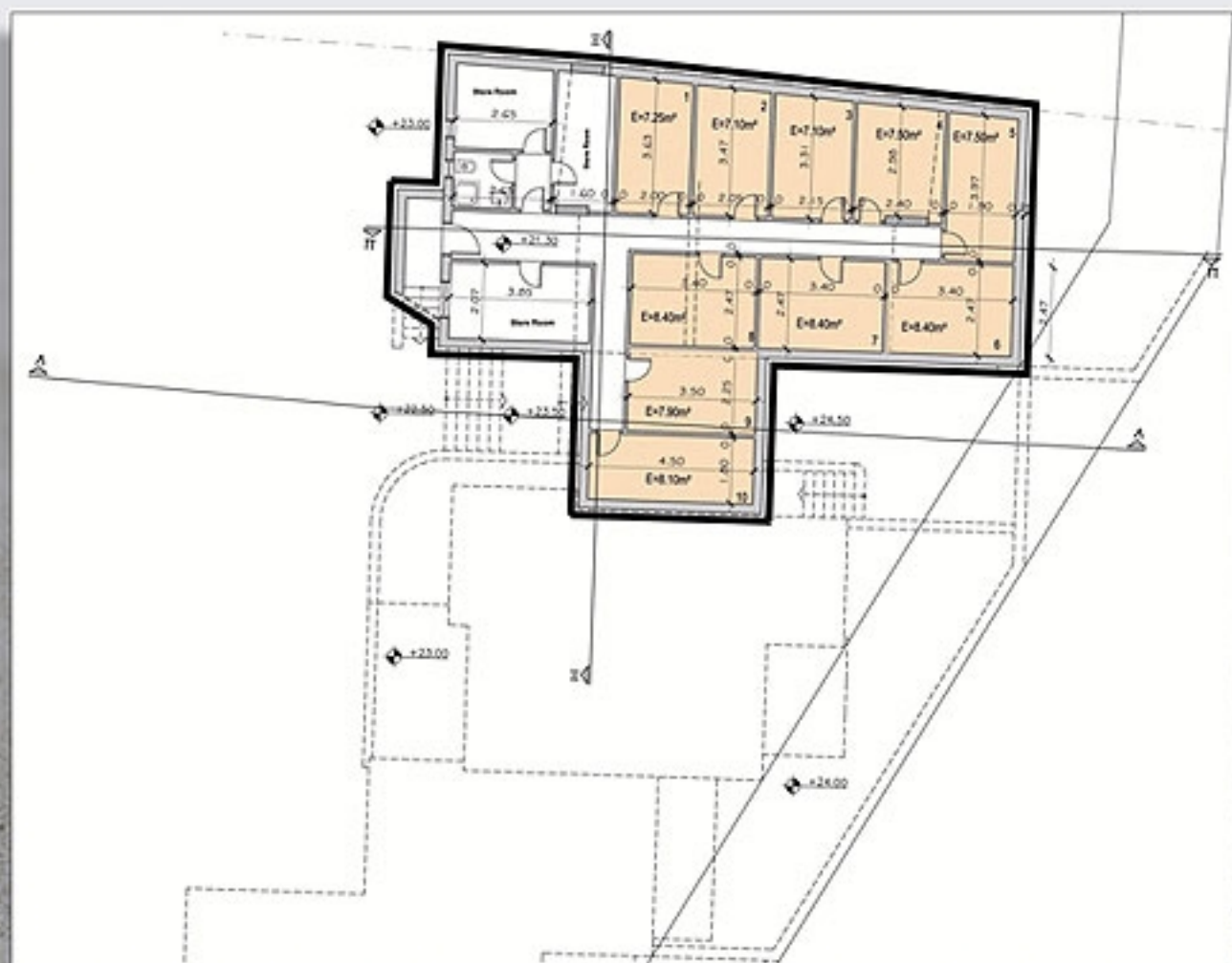
FIRST FLOOR PLANS - HOUSES 2.2 - 2.4



FIRST FLOOR PLANS - HOUSES 2.5 - 2.6



GROUND FLOOR PLANS - HOUSES 27 - 28



BASEMENT STORAGE PLAN





19A Ep. Marouli Str. • Rethymno • Crete • Greece

Tel.: +30 28310 51901 • Fax: +30 28310 54762

e-mail: [info@interlandcrete.com](mailto:info@interlandcrete.com)

[www.interlandcrete.com](http://www.interlandcrete.com)