

# Panorama Seafront Homes II

## Coastal properties



### House 5



### Property Information

Type: Semi-detached Villa  
House Size (m<sup>2</sup>): 50,80  
Bedrooms: 1  
Bathrooms: 1  
Land Size (m<sup>2</sup>): 89  
House Price(\*): **123.000 €**

\* Downpayment 2% to reserve the property

### Description

A charming and carefully designed 1 bed roomed home of 50, 80 m<sup>2</sup>, situated on 89, 15 m<sup>2</sup> of land. In this one storey semi detached home you will find an open plan kitchen coupled with a comfortable living room leading onto a beautiful patio with private garden overlooking the lake like/ cascading communal pool.

Separated through a corridor, leading to a bathroom and a spacious bedroom with its own private terrace where many mild evening can be enjoyed.

### Features

Mountain-Pool view  
Garden

Balconies- Veranda  
Underfloor Heating

Satellite TV  
Internet connections  
Built-in provision for A/C

### Not included

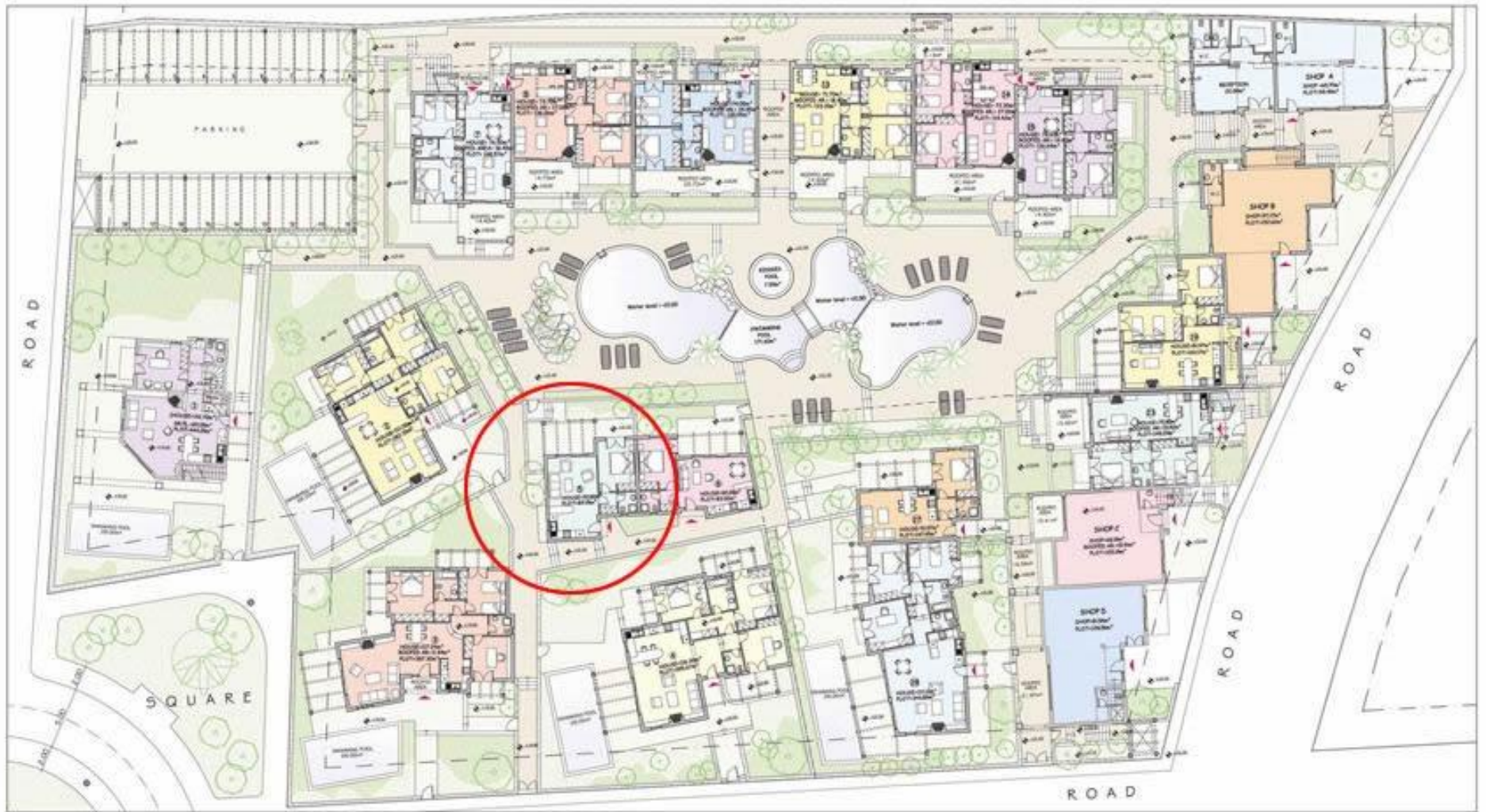
Legal expenses for the transfer of the property ownership  
Property management fees

Approximately 1- 1,2€/sqm/month

### Optional

Car Parking

4.100€ per place



PANORAMA SEAFRONT HOMES II  
PANORMO CRETE

GROUND FLOOR PLAN



PANORAMA SEAFRONT HOMES II  
PANORMO CRETE

GROUND FLOOR PLANS - HOUSES 5-6