

# Panorama Seafront Homes II

## Coastal properties



### Property Information

Type: Detached Villa  
House Size (m<sup>2</sup>): 116,30  
Bedrooms: 3  
Bathrooms: 2  
Land Size (m<sup>2</sup>): 396  
House Price(\*): **288.000 €**  
Private Pool  
(approx. 28m<sup>2</sup>): 32.000 €

### House 4

\* Downpayment 2% to reserve the property

### Description

A beautiful and individual styled 3 bed roomed villa of 116, 30 m<sup>2</sup> offering unobstructed sea views, situated on 395, 67 m<sup>2</sup> of land. In this one storey detached villa you'll be led through a reception area, an open plan kitchen and a spacious living/dining room. This beautiful villa also comprises of two spacious bedrooms, two bathrooms as well as a comfortable study room. Each room leads onto a beautiful terrace with a private garden and an optional swimming pool of 28 m<sup>2</sup>.

### Features

Sea view  
Mountain-Pool view  
Garden

Balconies- Veranda  
Underfloor Heating  
Fireplace

Satellite TV  
Internet connections  
Built-in provision for A/C

### Not included

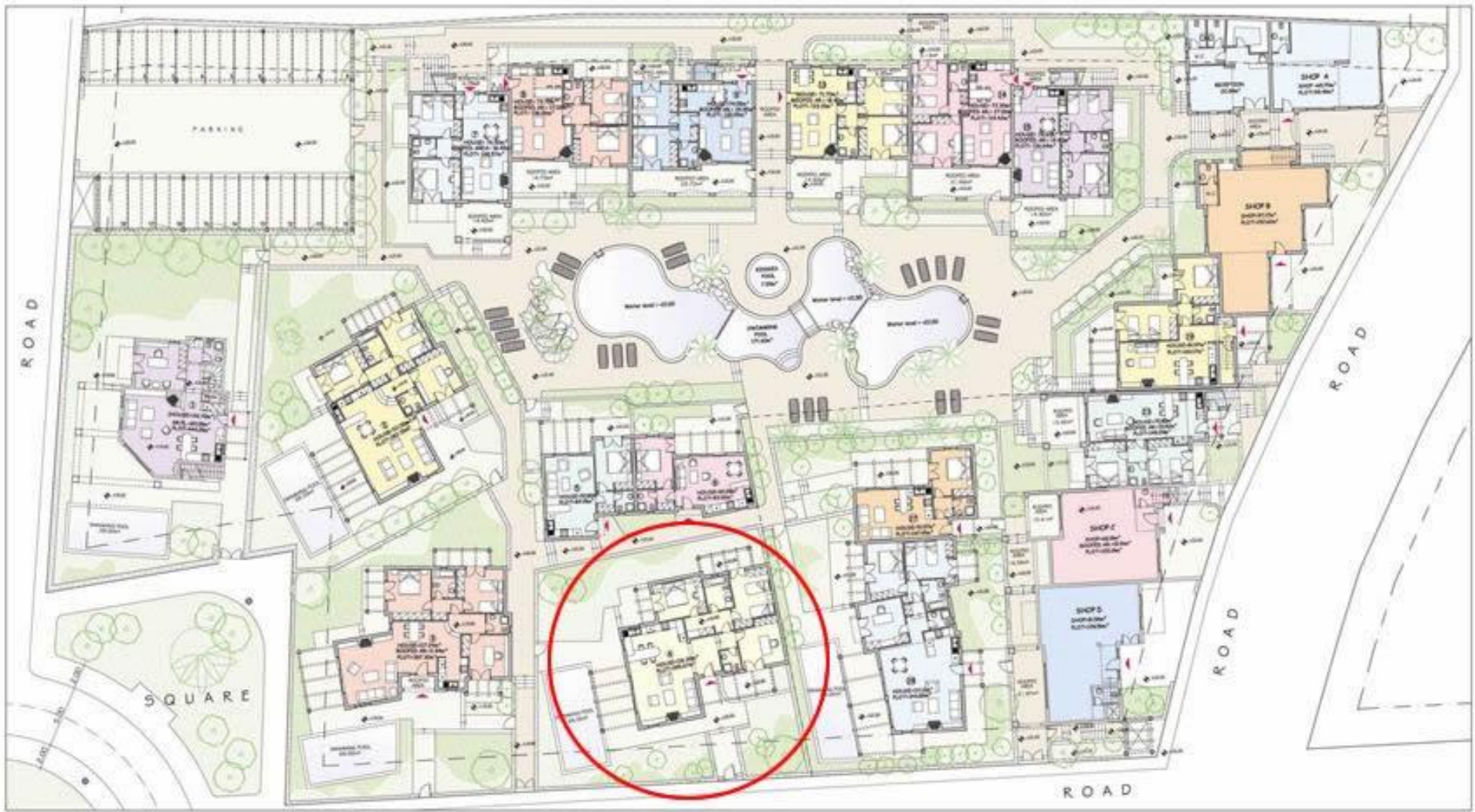
Legal expenses for the transfer of the property ownership  
Property management fees

Approximately 1- 1,2€/sqm/month

### Optional

Car Parking

4.100€ per place



PANORAMA SEAFROST HOMES II  
PANORMO CRETE

GROUND FLOOR PLAN



PANORAMA SEAFRONT HOMES II  
PANORMO CRETE

GROUND FLOOR PLAN - HOUSE 4