

# Panorama Seafront Homes II

## Coastal properties



### House 27

#### Property Information

Type: Semi-detached villa  
House Size (m<sup>2</sup>): 51,97  
Bedrooms: 1  
Bathrooms: 1  
Land Size (m<sup>2</sup>): 147  
House Price(\*): **SOLD**

\* Downpayment 2% to reserve the property

#### Description

A charming 1 bedroom home of 51, 97 m<sup>2</sup> situated on 147, 45 m<sup>2</sup> of land. This elegant one storey semi detached home comprises of an open plan kitchen, a comfortable living/dining room. Separated through a corridor, you will be lead to a bathroom and a spacious bedroom. All rooms lead to the spacious, private patios/garden overlooking the tranquil cascading lake like communal pool.

#### Features

Mountain-Pool view  
Garden

Balconies- Veranda  
Underfloor Heating

Satellite TV  
Internet connections  
Built-in provision for A/C

#### Not included

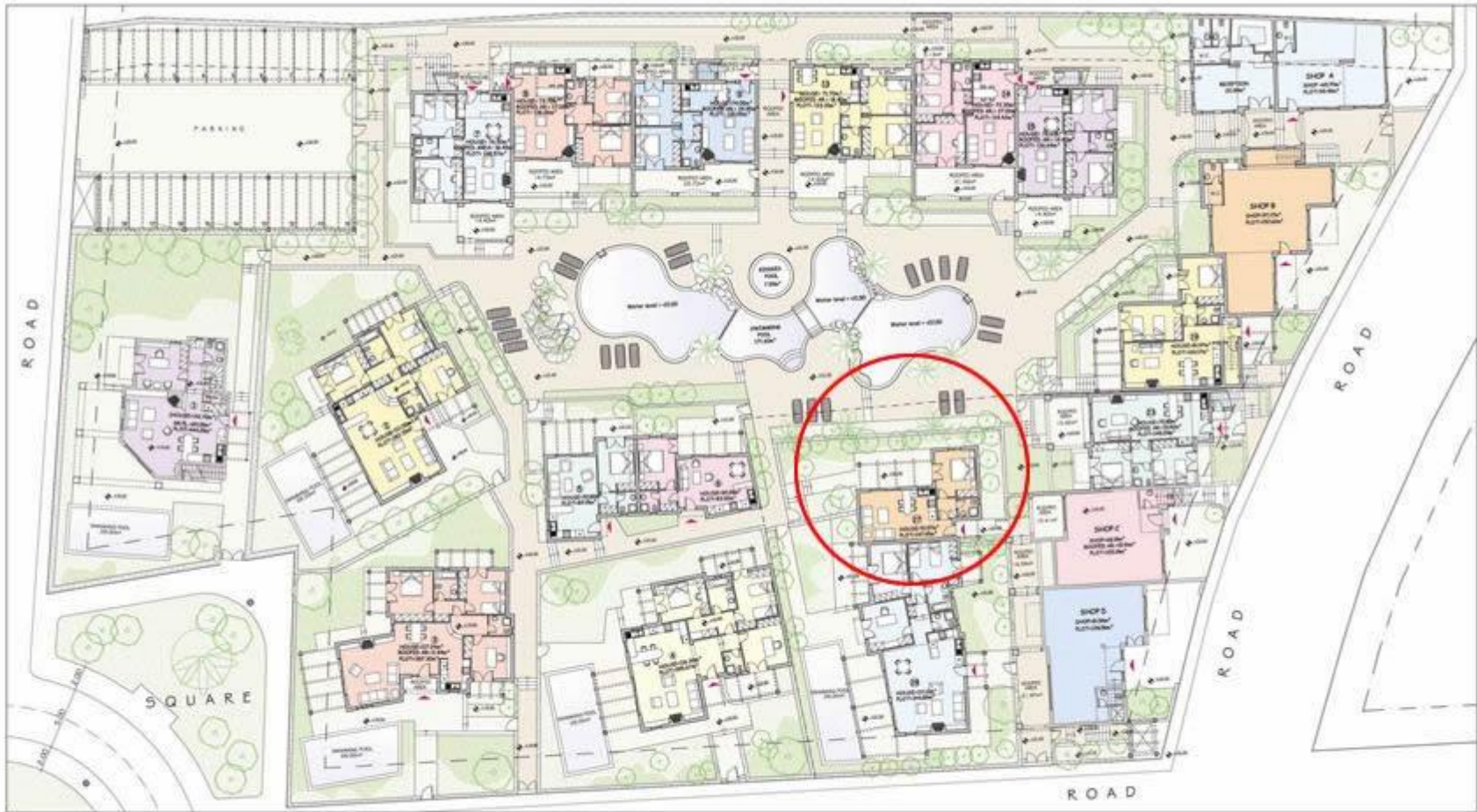
Legal expenses for the transfer of the property ownership  
Property management fees

Approximately 1- 1,2€/sqm/month

#### Optional

Car Parking

4.100€ per place



PANORAMA SEAFRONT HOMES II  
PANORMO CRETE

GROUND FLOOR PLAN



PANORAMA SEAFRONT HOMES II  
PANORMO CRETE

GROUND FLOOR PLANS - HOUSES 27-28