

Panorama Seafront Homes II

Coastal properties



Property Information

Type: Detached Villa
House Size (m²): 111
Bedrooms: 3
Bathrooms: 2
Land Size (m²): 382
House Price(*): **284.000 €**
Private Pool
(approx. 28m²): 32.000 €

House 2

* Downpayment 2% to reserve the property

Description

A beautiful and individual styled 3 bed roomed villa of 111, 00 m² offering unobstructed sea views, situated on 382, 15 m² of land, this one storey detached villa comprises of an open plan kitchen, a spacious living/dining room and a traditional fire place which will set the tone during the cold winter nights. With steps leading up to a comfortable study room and a WC you'll pass through the corridor which leads to a separate area with two spacious bedrooms and a bathroom. Each room of this villa leads onto a beautiful terrace with a private garden and an optional swimming pool of 28 m²

Features

Sea view

Mountain-Pool view

Garden

Balconies- Veranda

Underfloor Heating

Fireplace

Satellite TV

Internet connections

Built-in provision for A/C

Not included

Legal expenses for the transfer of the property ownership

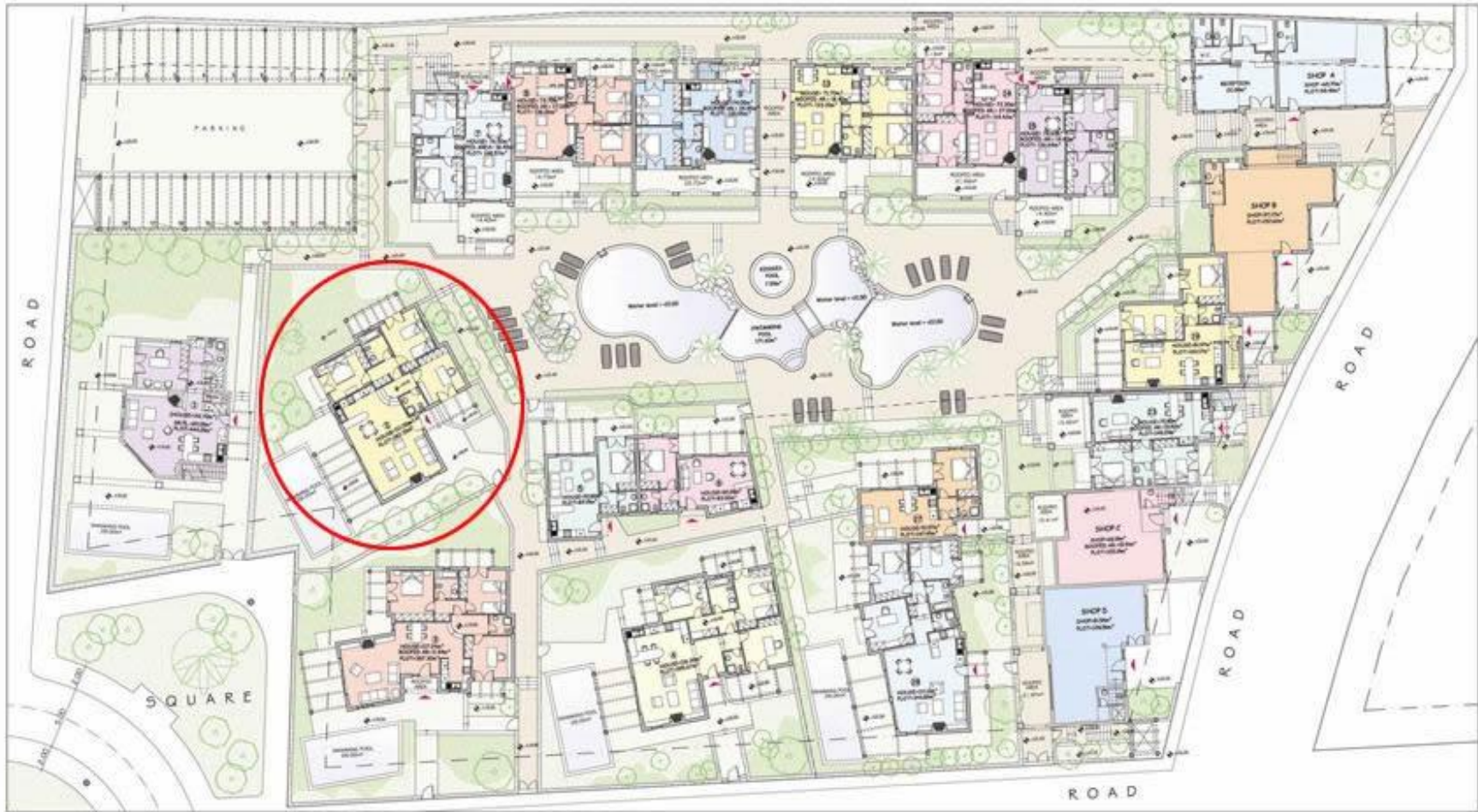
Property management fees

Approximately 1- 1,2€/sqm/month

Optional

Car Parking

4.100€ per place



PANORAMA SEAFRONT HOMES II
PANORMO CRETE

GROUND FLOOR PLAN



PANORAMA SEAFRONT HOMES II
PANORMO CRETE

GROUND FLOOR PLAN - HOUSE 2