

Panorama Seafront Homes II

Coastal properties



Property Information

Type: First floor Apartment
House Size (m²): 72,42
Bedrooms: 2
Bathrooms: 1
Land Size (m²):
House Price(*): **182.000 €**

House 18

* Downpayment 2% to reserve the property

Description

An exclusive sea facing 2 bed roomed home of 73, 42 m², in this unique first floor home you'll find an open plan kitchen, spacious living/dining room with an optional traditional fire place. A corridor leads into a separate area which comprises of a bathroom and two spacious bedrooms, each with their own veranda offering tranquil sea and pool views. The living room area opens up onto a beautiful veranda with panoramic sea and pool views.

Features

Sea view
Mountain-Pool view

Balconies- Veranda
Underfloor Heating
Fireplace

Satellite TV
Internet connections
Built-in provision for A/C

Not included

Legal expenses for the transfer of the property ownership
Property management fees

Approximately 1- 1,2€/sqm/month

Optional

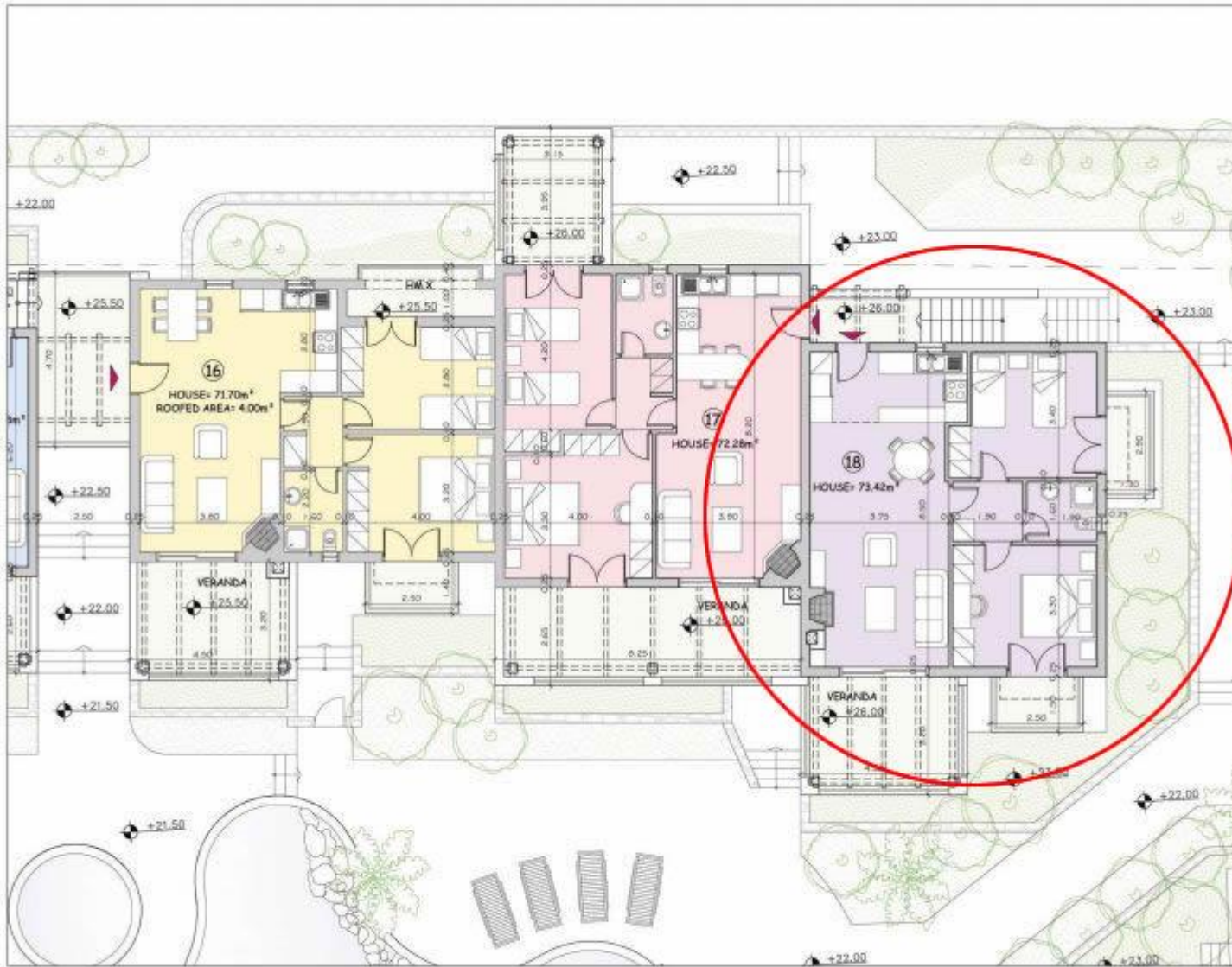
Car Parking

4.100€ per place



PANORAMA SEAFRONT HOMES II
PANORMO CRETE

FIRST FLOOR PLAN



PANORAMA SEAFRONT HOMES II
PANORMO CRETE

FIRST FLOOR PLANS - HOUSES 16-17-18