

Panorama Seafront Homes II

Coastal properties



House 14

Property Information

Type: Ground floor Apartment
House Size (m²): 72,30
Bedrooms: 2
Bathrooms: 1
Land Size (m²): 114
House Price(*): **175.000 €**

* Downpayment 2% to reserve the property

Description

A stylish 2 bed roomed home of 72, 30 m², situated on 114, 42 m² of land, this exclusive home comprises of an open plan kitchen and a spacious living/dining room. Through a corridor you will be led into a separate area with a bathroom and two spacious bedrooms, each with their own terrace. The living room area opens up onto a roofed terrace leading onto your own private garden and the subtropical landscaped communal gardens with cascading lake like pool.

Features

Garden
Mountain-Pool view

Balconies- Veranda
Underfloor Heating

Satellite TV
Internet connections
Built-in provision for A/C

Not included

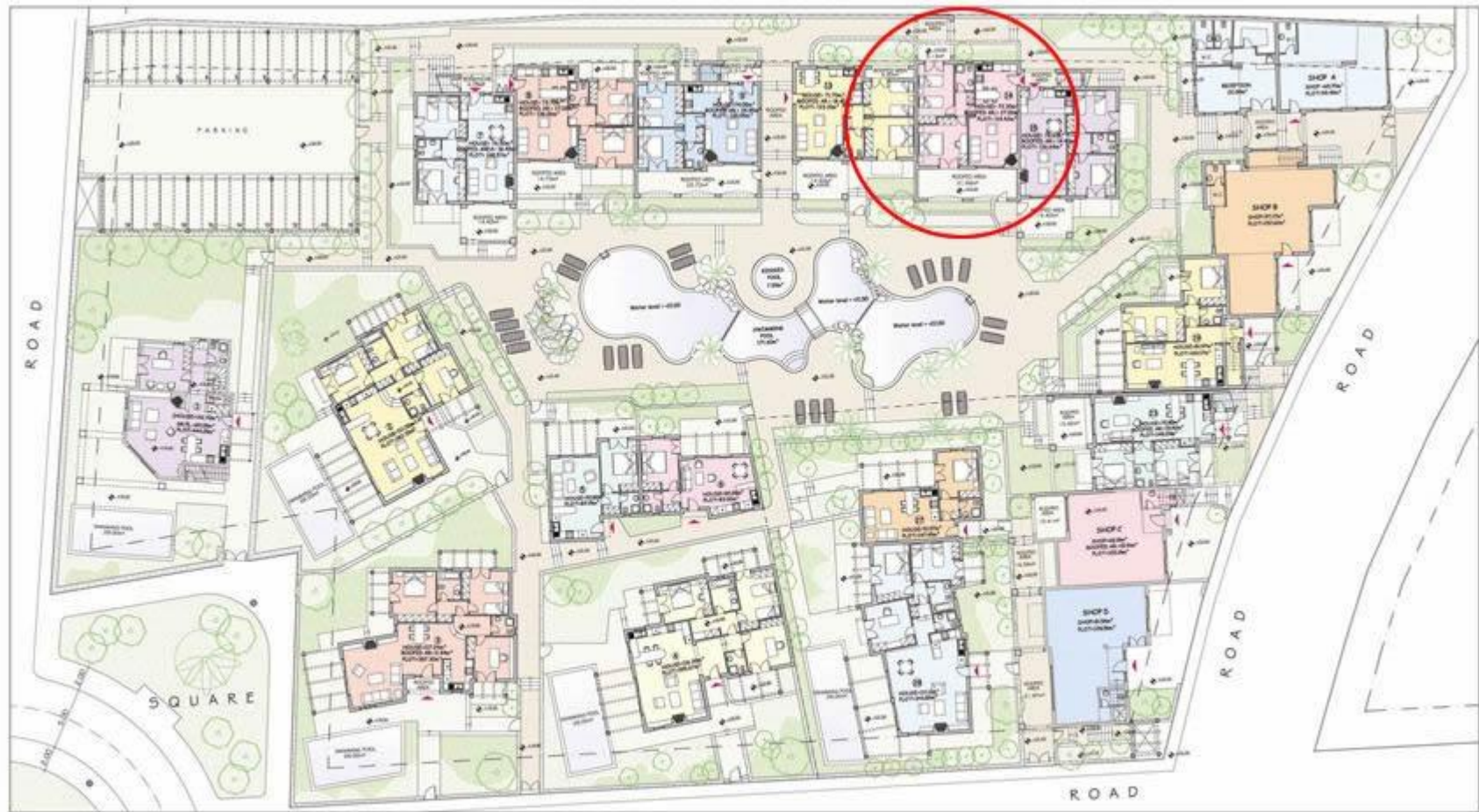
Legal expenses for the transfer of the property ownership
Property management fees

Approximately 1- 1,2€/sqm/month

Optional

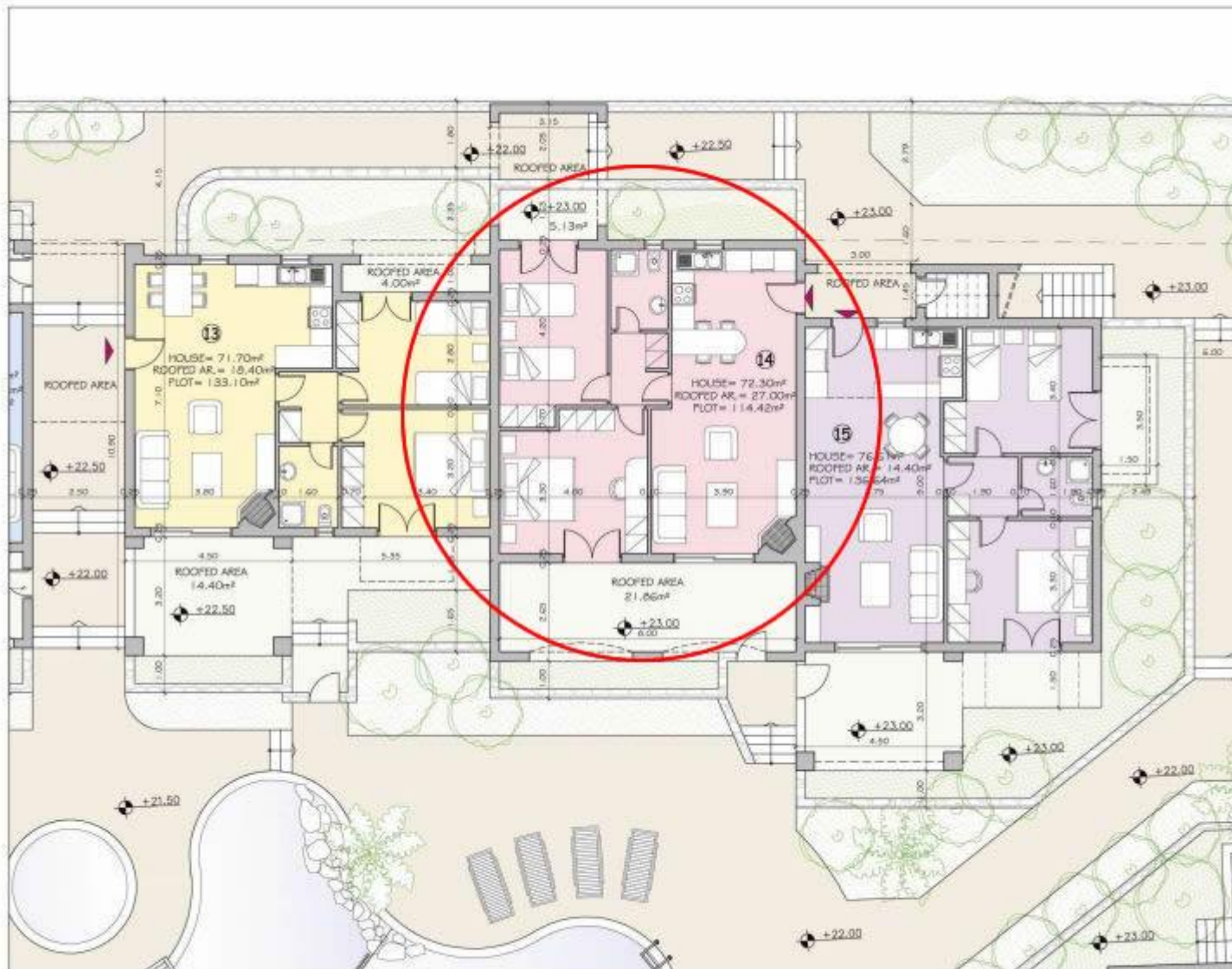
Car Parking

4.100€ per place



PANORAMA SEAFRONT HOMES II
PANORMO CRETE

GROUND FLOOR PLAN



PANORAMA SEAFRONT HOMES II
 PANORMO CRETE
 GROUND FLOOR PLANS - HOUSES 13-14-15