

# Panorama Seafront Homes II

## Coastal properties



### House 13

#### Property Information

Type: Ground floor Apartment  
House Size (m<sup>2</sup>): 71,70  
Bedrooms: 2  
Bathrooms: 1  
Land Size (m<sup>2</sup>): 133  
House Price(\*): **174.000 €**

\* Downpayment 2% to reserve the property

#### Description

A sophisticated 2 bedroomed home of 71, 70 m<sup>2</sup>, situated on 133, 10 m<sup>2</sup> of land, this exclusive home comprises of an open plan kitchen, and a spacious living/dining room. Through a corridor you will be led into a separate area with a bathroom and two spacious bedrooms, each with their own terrace. The living room area opens up onto a roofed terrace leading onto your own private garden and the subtropical landscaped communal gardens with cascading lake like pool.

#### Features

Garden	Balconies- Veranda	Satellite TV
Mountain-Pool view	Underfloor Heating	Internet connections
		Built-in provision for A/C

#### Not included

Legal expenses for the transfer of the property ownership  
Property management fees

Approximately 1- 1,2€/sqm/month

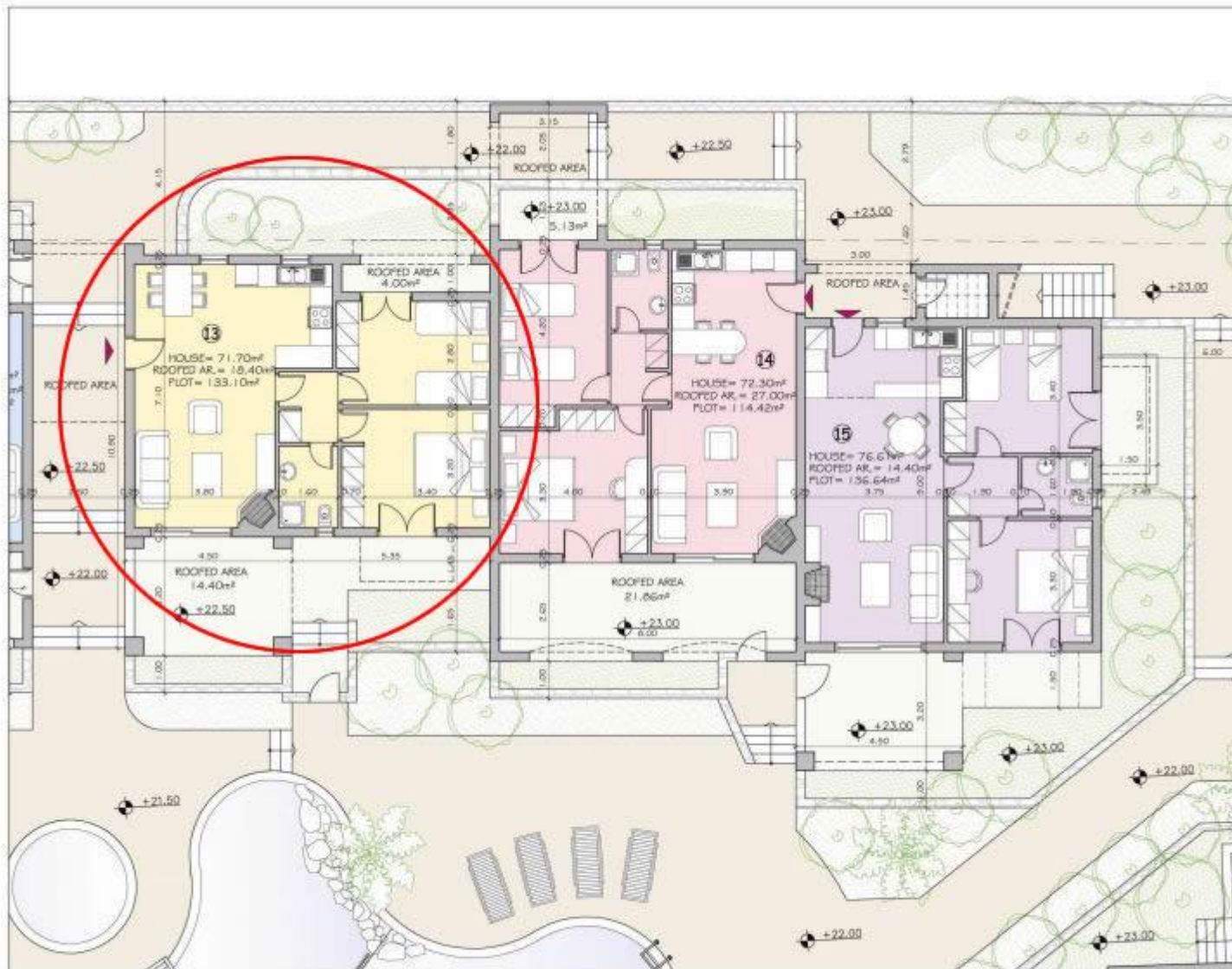
#### Optional

Car Parking 4.100€ per place



PANORAMA SEAFRONT HOMES II  
PANORMO CRETE

GROUND FLOOR PLAN



PANORAMA SEAFRONT HOMES II  
 PANORMO CRETE

GROUND FLOOR PLANS - HOUSES 13-14-15